



KINGSHAVEN

TYPE B END



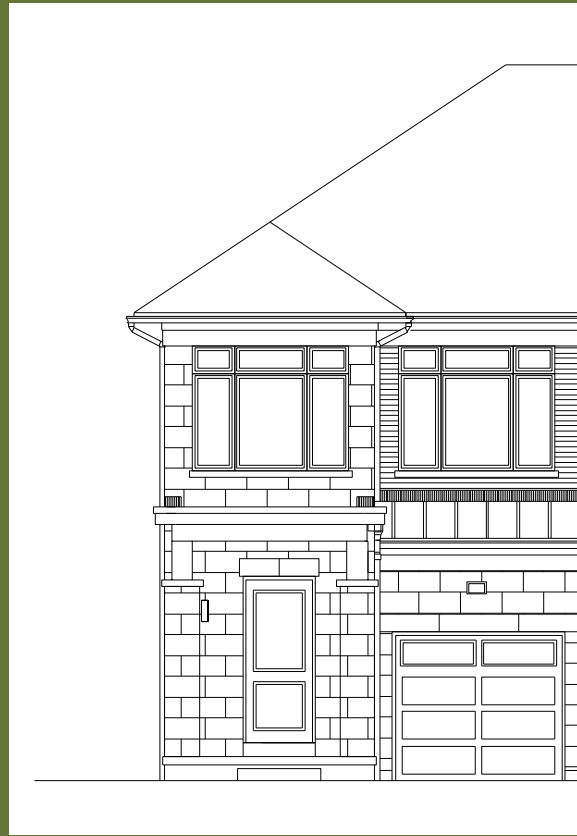
1,770 SQ.FT.

KINGSMEN
GROUP INC.



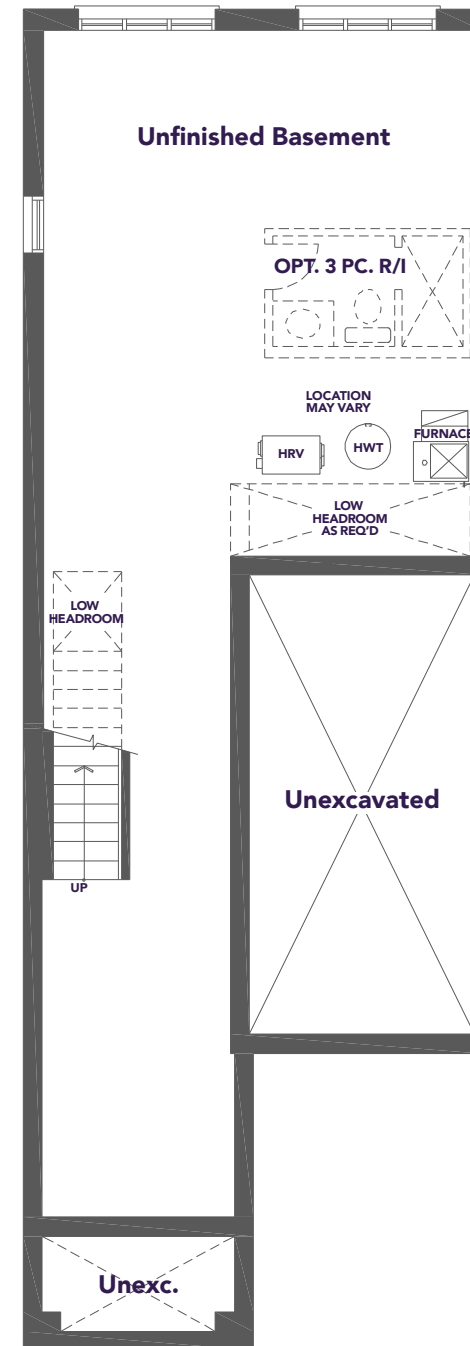
A MARKHAM-STOUFFVILLE COMMUNITY
BY KINGSMEN

TYPE B END

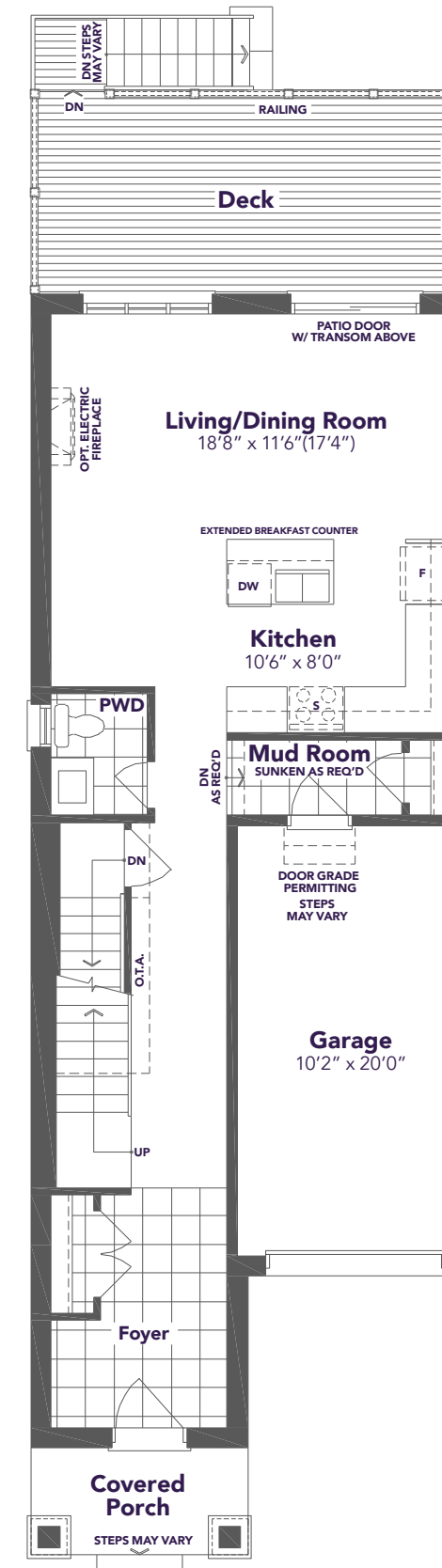


1,770 SQ.FT.

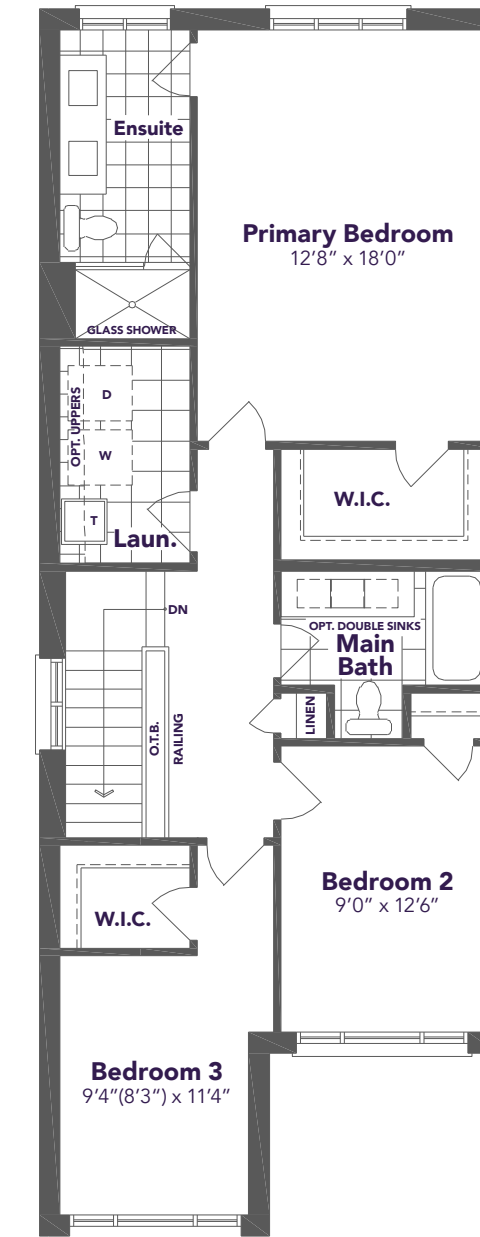
Materials, specifications, and floor plans are subject to change without notice. All areas and stated dimensions are approximate. Actual usable floor space, living area and square footage may vary from stated floor area. Illustrations are artist's concept. E. & O. E.
June 2026



BASEMENT PLAN



GROUND FLOOR PLAN



SECOND FLOOR PLAN