



KINGSHAVEN

TYPE B MOD



2,355 SQ.FT.

KINGSMEN
GROUP INC.

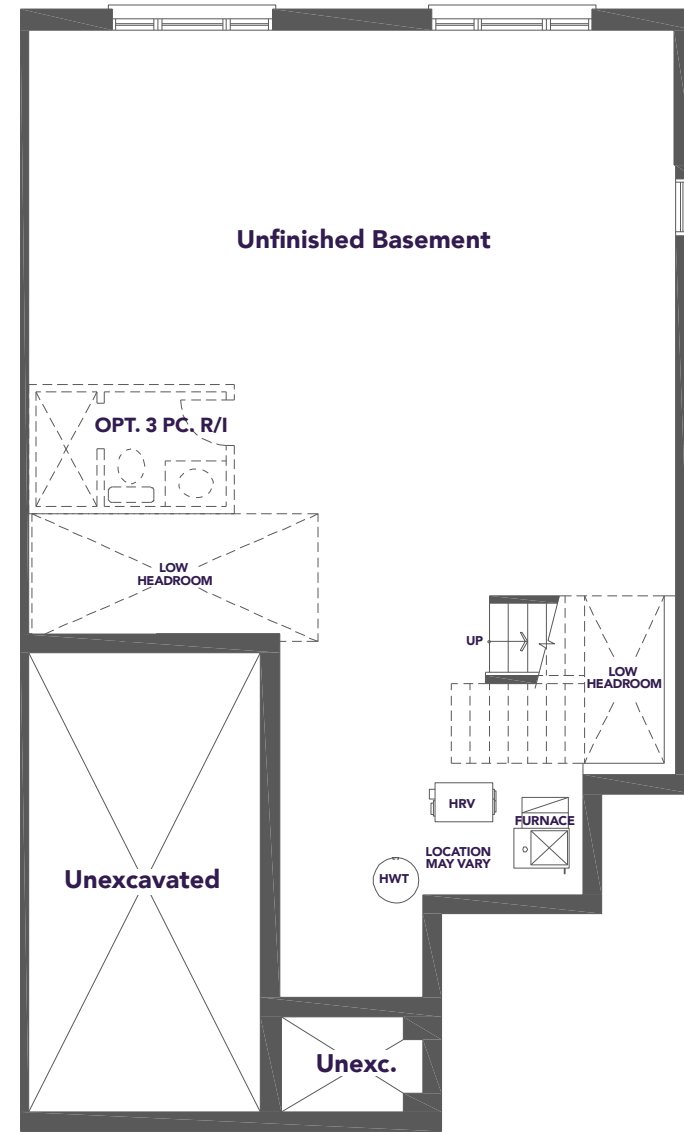


A MARKHAM-STOUFFVILLE COMMUNITY
BY KINGSMEN

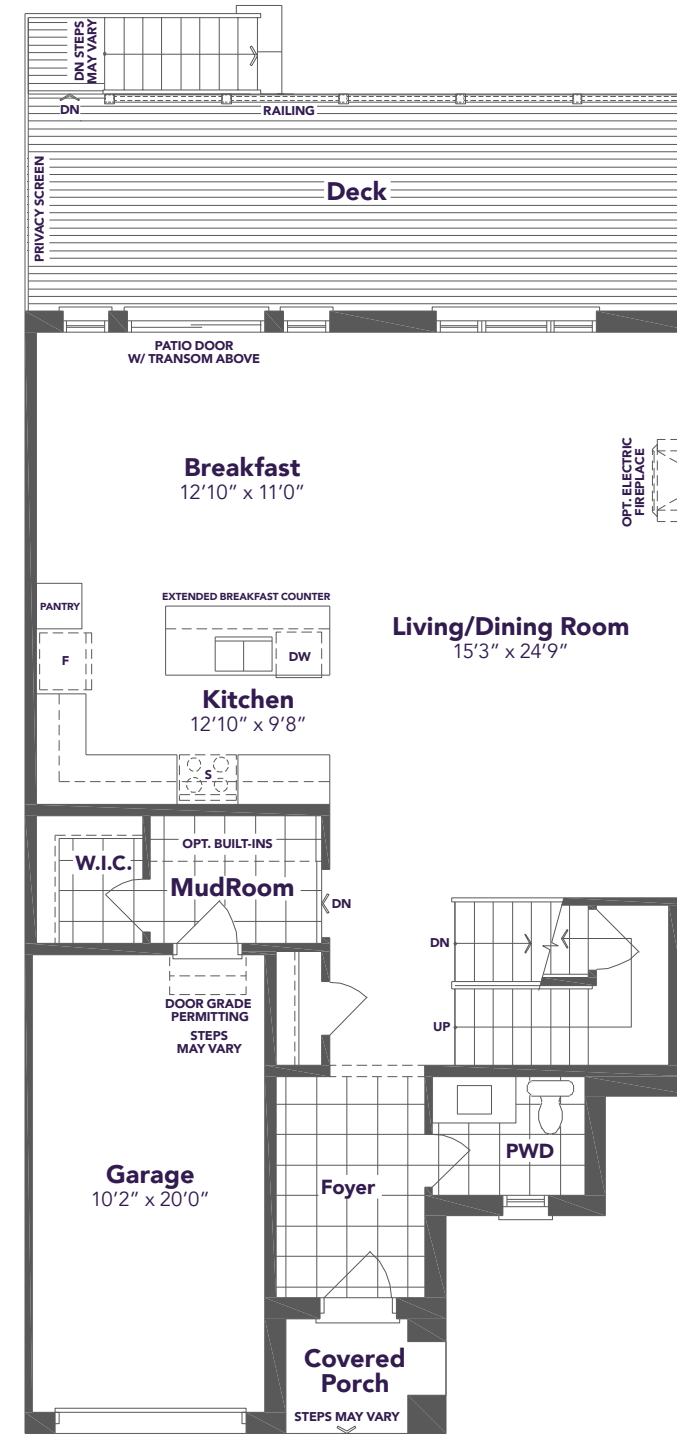
TYPE B MOD



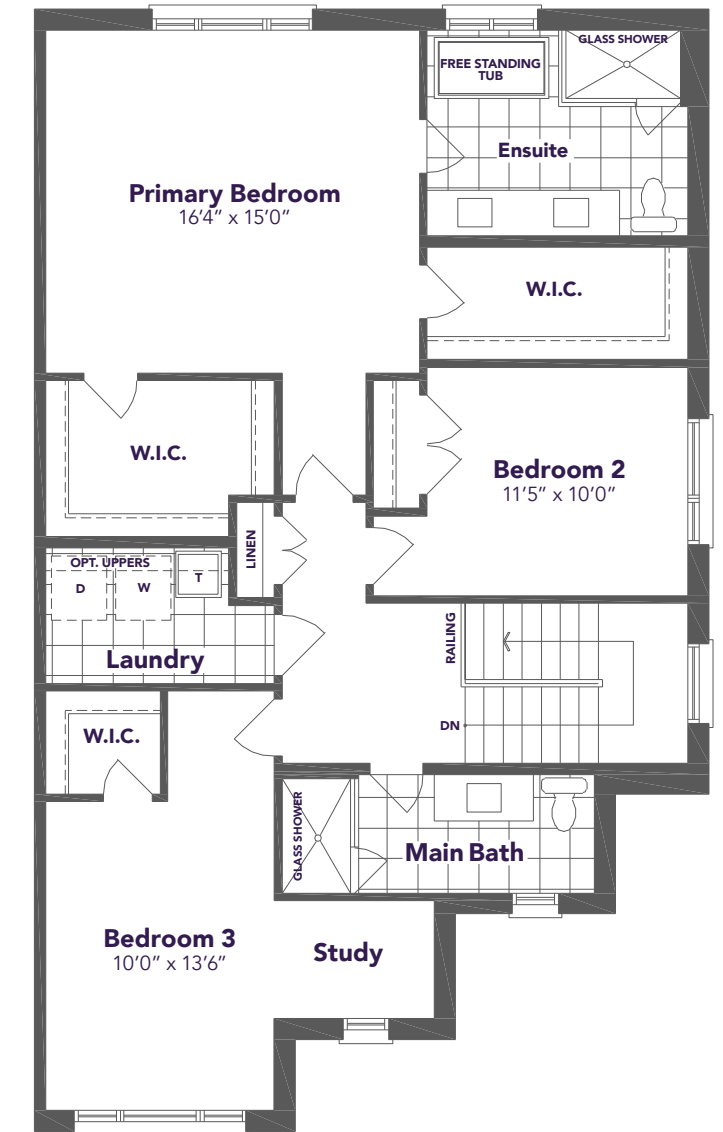
2,355 SQ.FT.



BASEMENT PLAN



GROUND FLOOR PLAN



SECOND FLOOR PLAN