



KINGSHAVEN

TYPE C MOD COR



1,984 SQ.FT.

KINGSIIEN
GROUP INC.

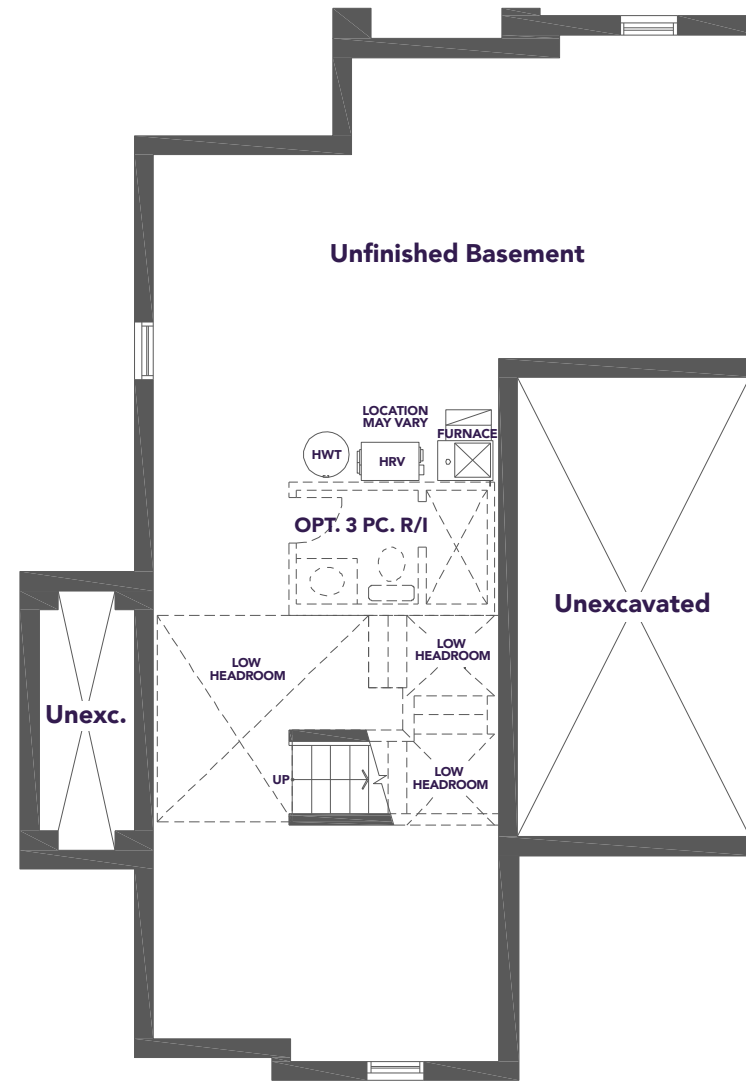


A MARKHAM-STOUFFVILLE COMMUNITY
BY KINGSMEN

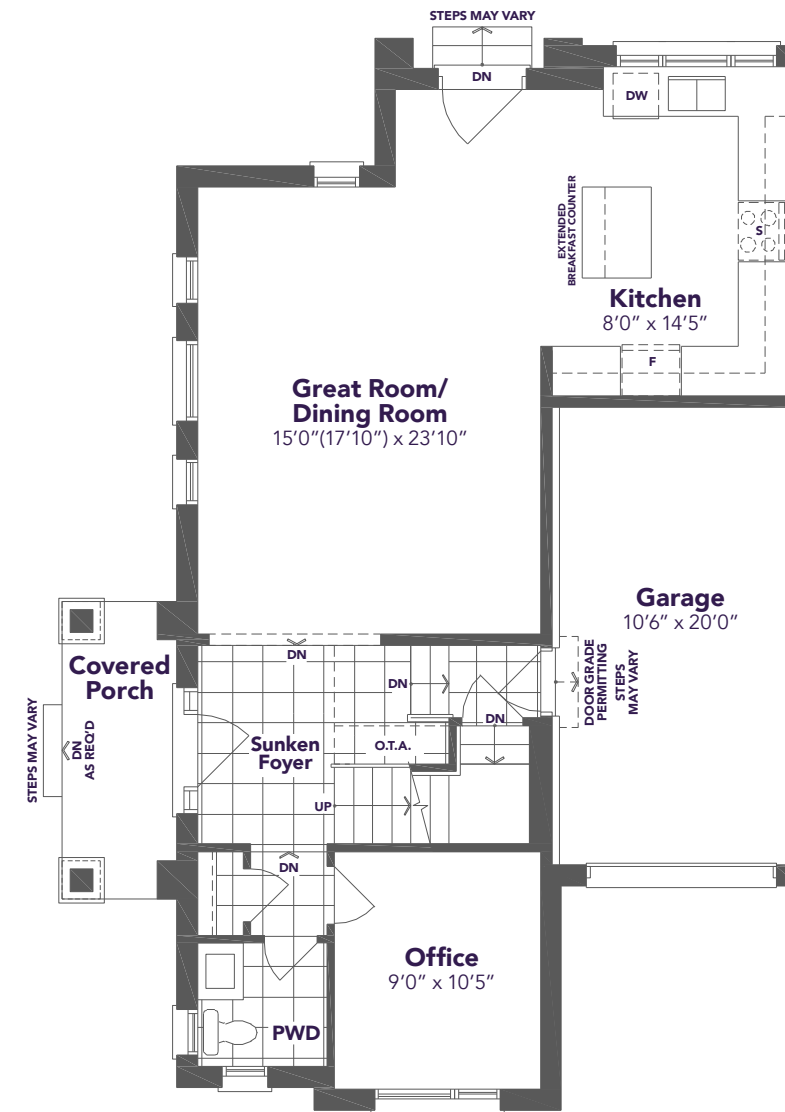
TYPE C MOD COR



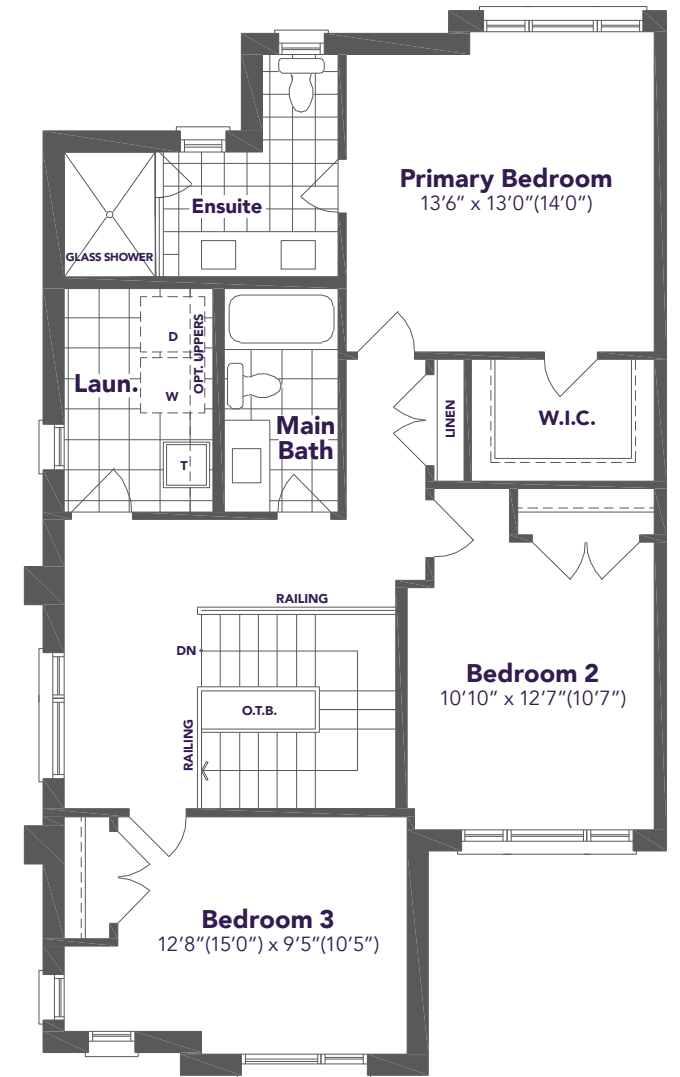
1,984 SQ.FT.



BASEMENT PLAN



GROUND FLOOR PLAN



SECOND FLOOR PLAN