



KINGSHAVEN

TYPE D INT



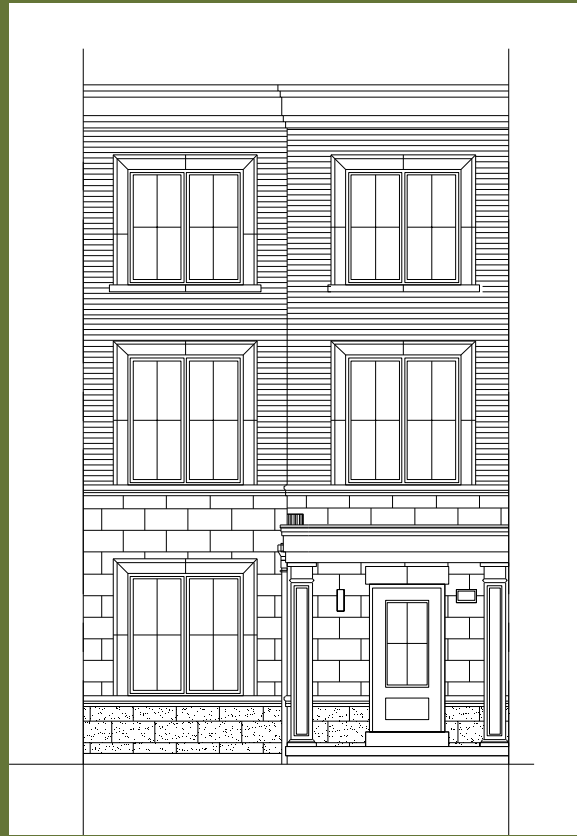
2,318 SQ.FT.

KINGSIIEN
GROUP INC.



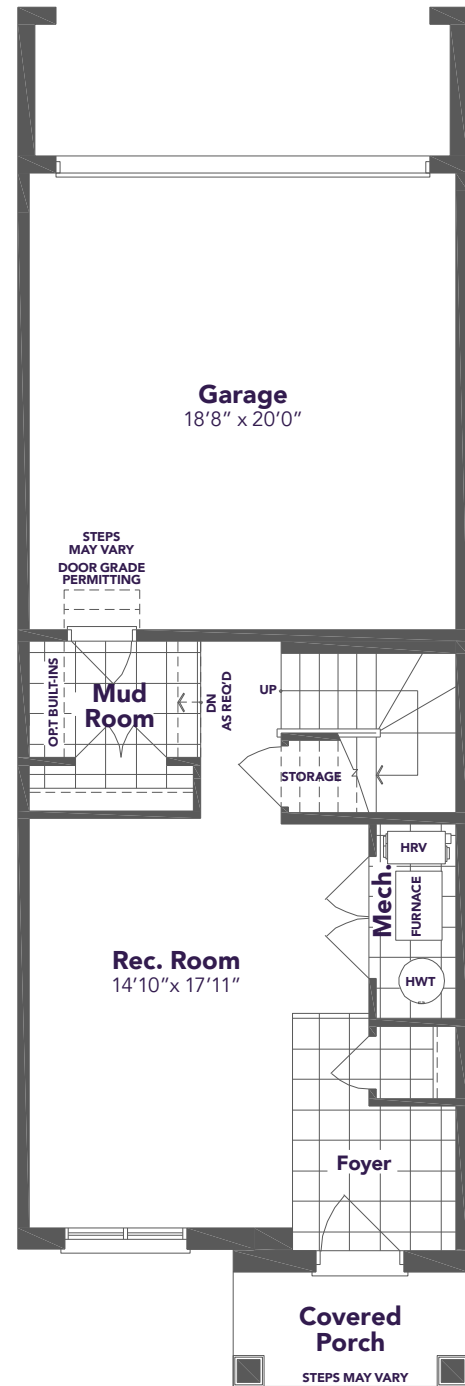
A MARKHAM-STOUFFVILLE COMMUNITY
BY KINGSMEN

TYPE D INT

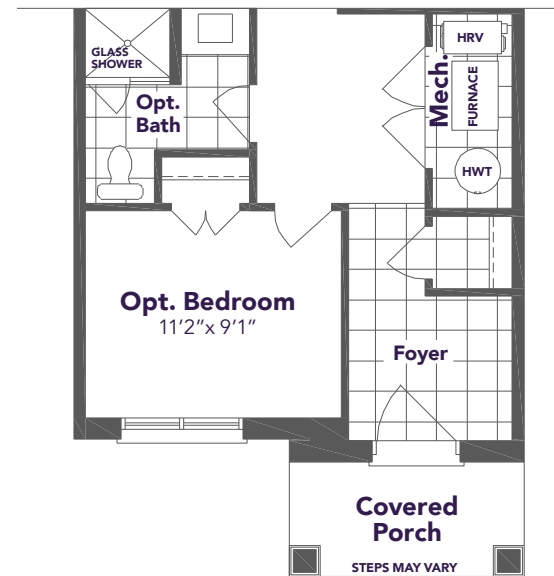


2,318 SQ.FT.

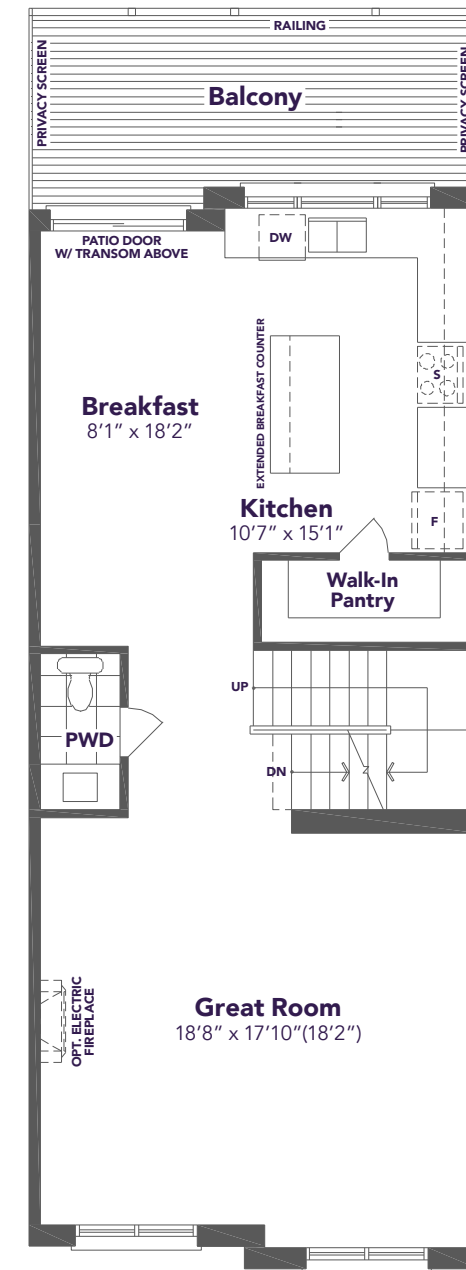
Materials, specifications, and floor plans are subject to change without notice. All areas and stated dimensions are approximate. Actual usable floor space, living area and square footage may vary from stated floor area. Illustrations are artist's concept. E. & O. E.
June 2026



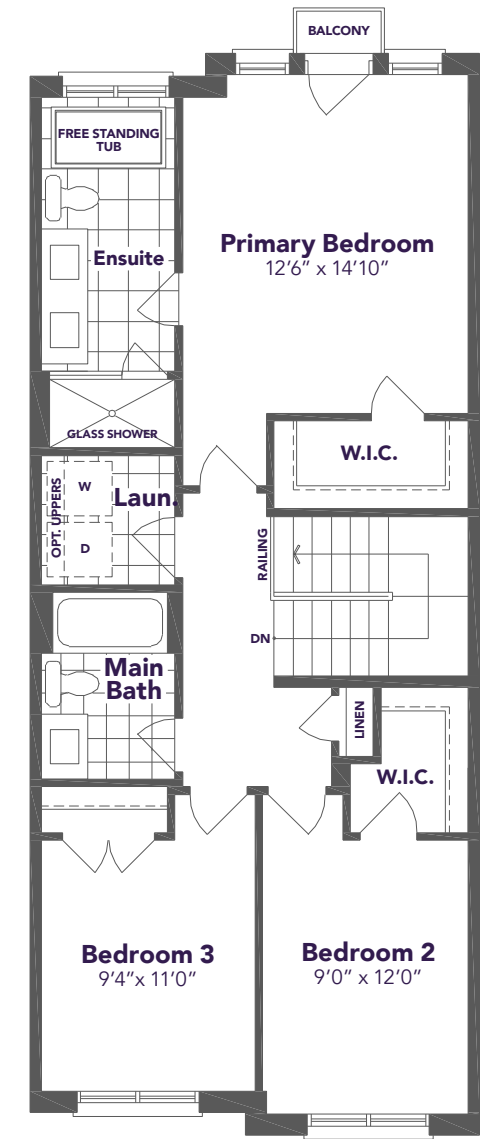
GROUND FLOOR PLAN



OPTIONAL GROUND FLOOR PLAN
W/ OPTIONAL BEDROOM



SECOND FLOOR PLAN



THIRD FLOOR PLAN