



KINGSHAVEN

TYPE D MOD



2,837 SQ.FT.

KINGSIIEN
GROUP INC.

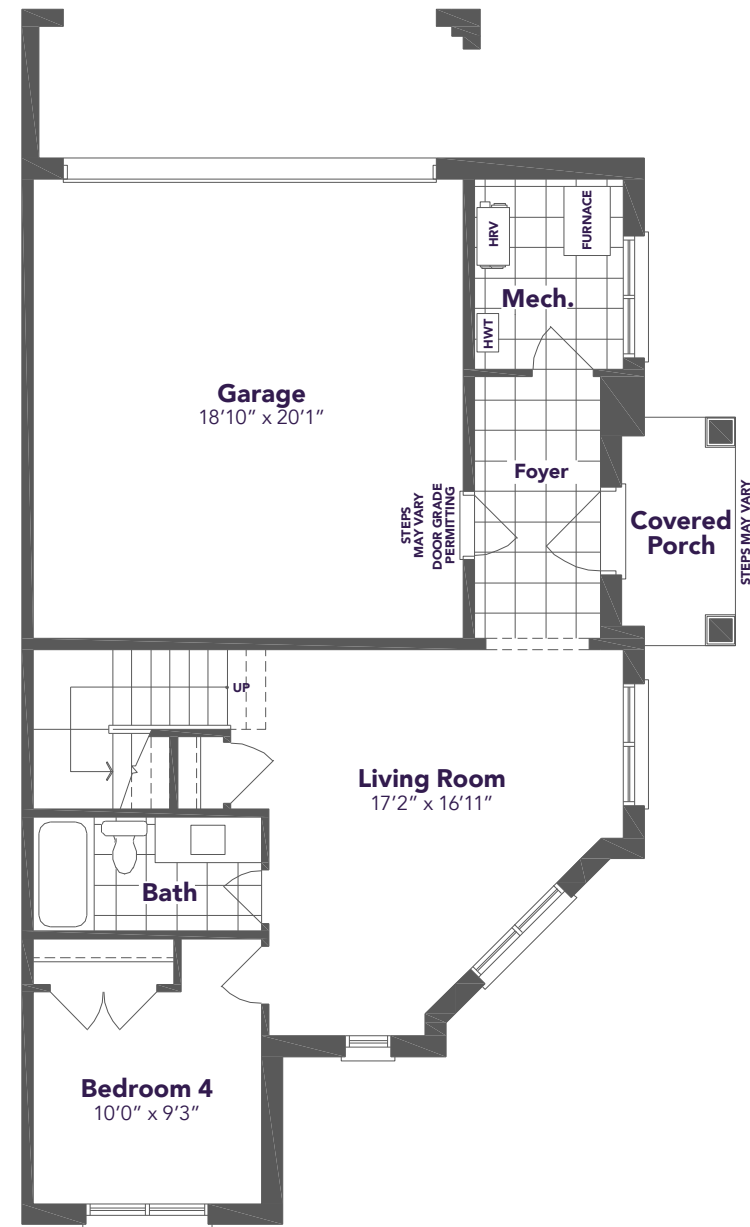


A MARKHAM-STOUFFVILLE COMMUNITY
BY KINGSMEN

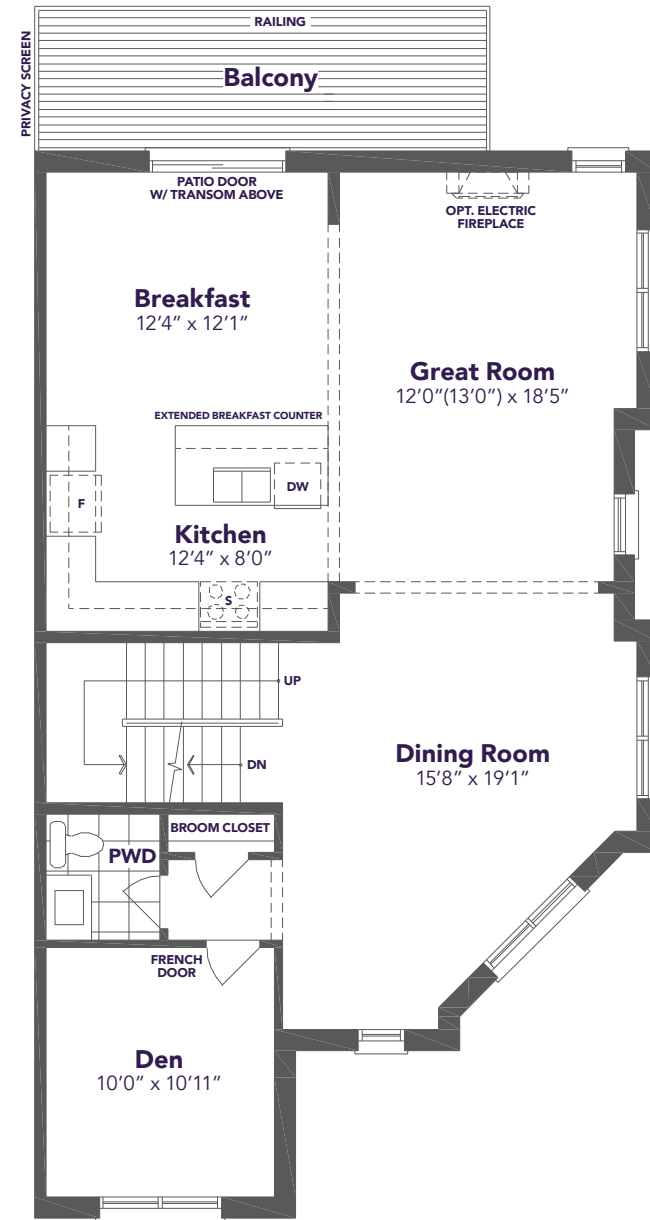
TYPE D MOD



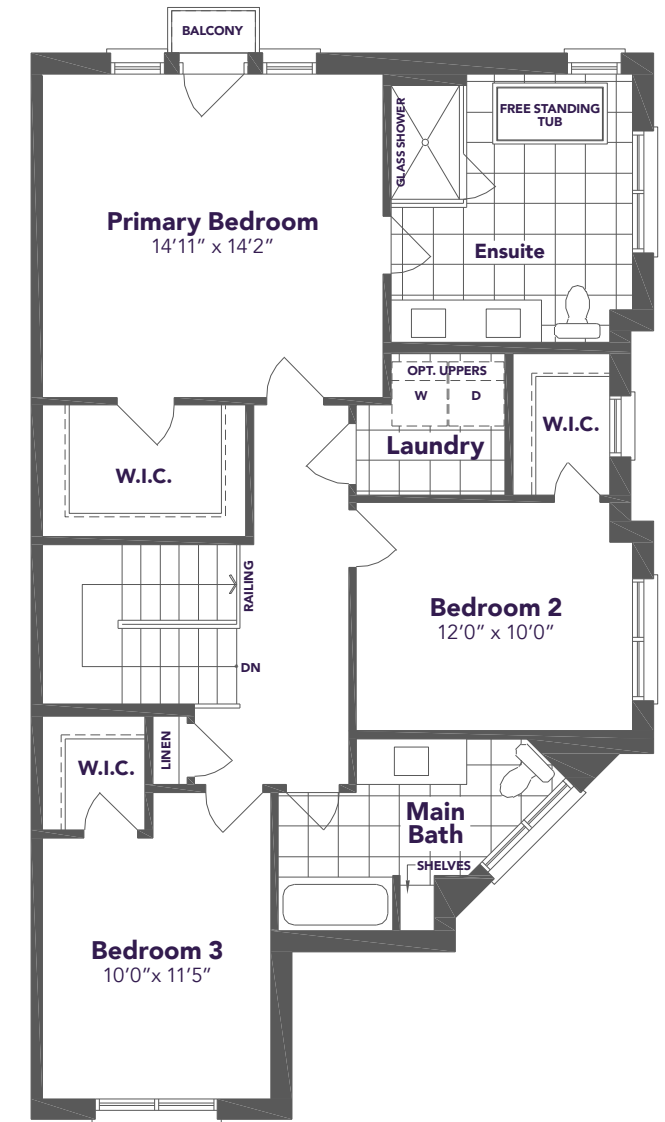
2,837 SQ.FT.



GROUND FLOOR PLAN



SECOND FLOOR PLAN



THIRD FLOOR PLAN

Materials, specifications, and floor plans are subject to change without notice. All areas and stated dimensions are approximate. Actual usable floor space, living area and square footage may vary from stated floor area. Illustrations are artist's concept. E. & O. E.
June 2026