



KINGSHAVEN

TYPE E INT



2,066 SQ.FT.

KINGSIIEN
GROUP INC.



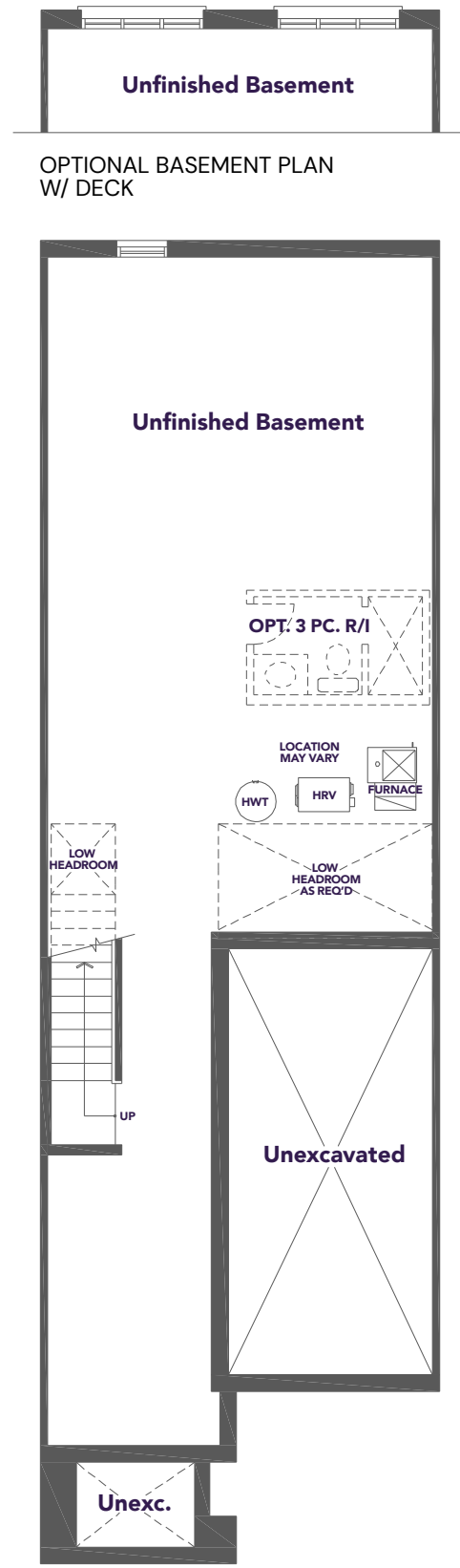
A MARKHAM-STOUFFVILLE COMMUNITY
BY KINGSMEN

TYPE E INT

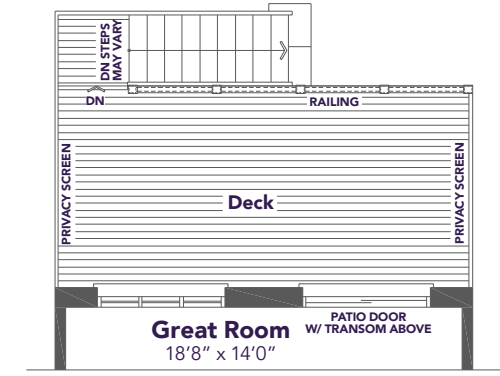


2,066 SQ.FT.

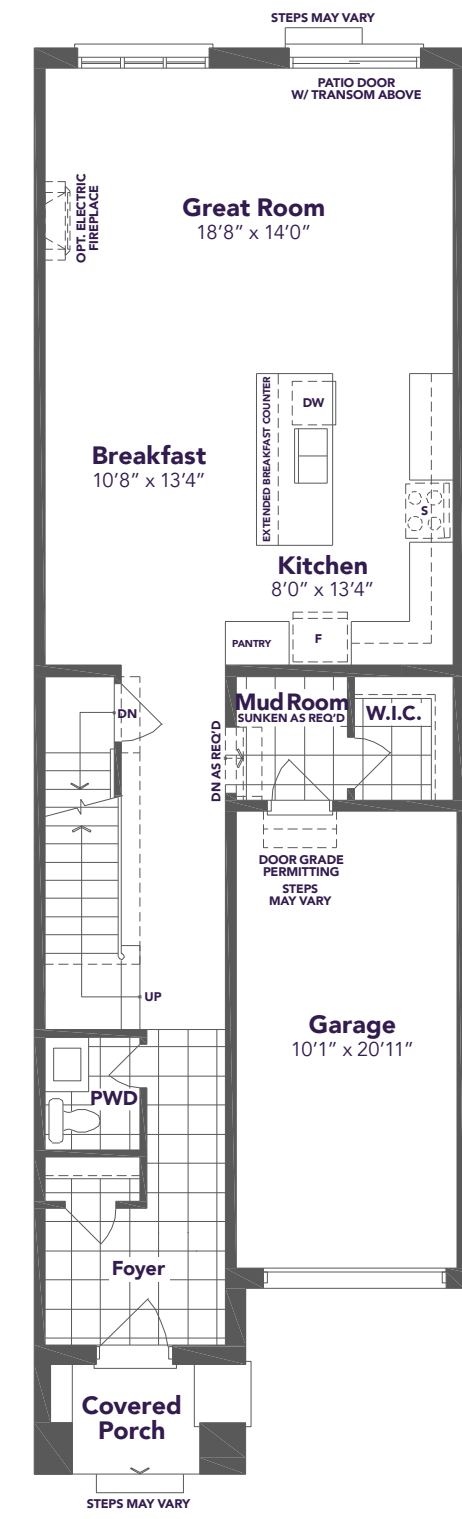
Materials, specifications, and floor plans are subject to change without notice. All areas and stated dimensions are approximate. Actual usable floor space, living area and square footage may vary from stated floor area. Illustrations are artist's concept. E. & O. E. June 2026



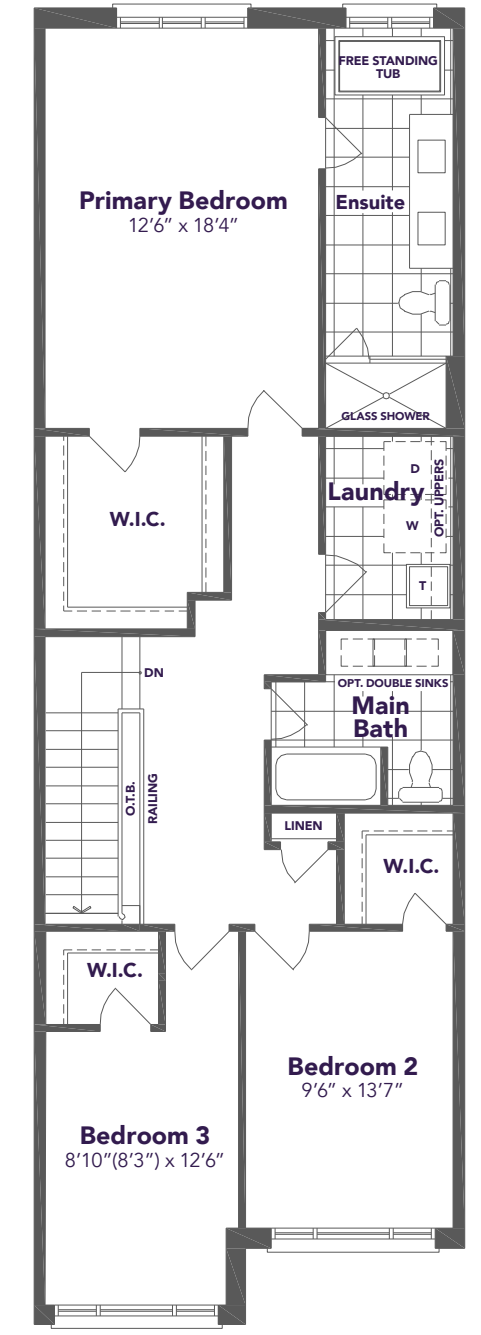
BASEMENT PLAN



OPTIONAL GROUND FLOOR PLAN W/ DECK



GROUND FLOOR PLAN



SECOND FLOOR PLAN