



KINGSHAVEN

TYPE E MOD UPG.



2,165 SQ.FT.

KINGSMEN
GROUP INC.

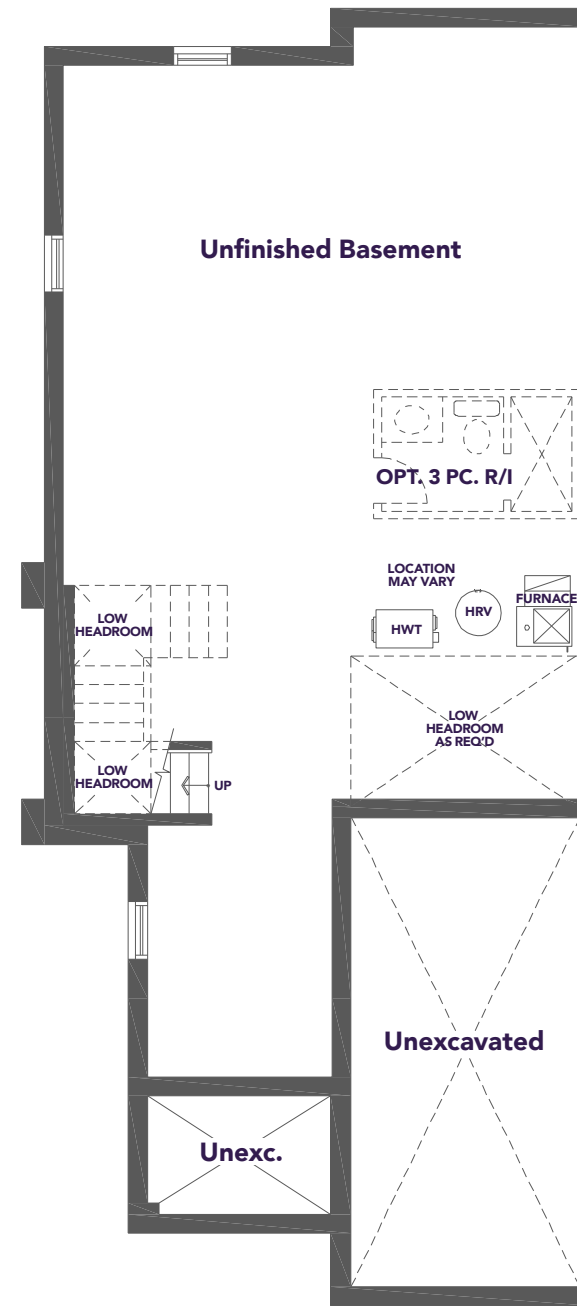


A MARKHAM-STOUFFVILLE COMMUNITY
BY KINGSMEN

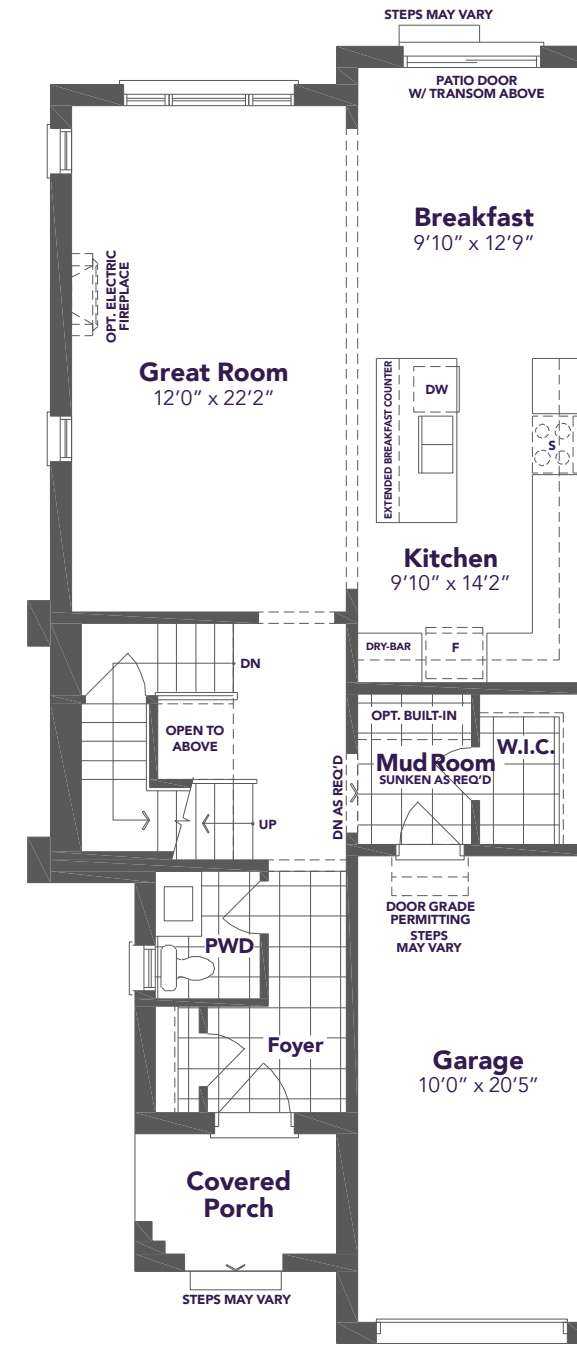
TYPE E MOD UPG.



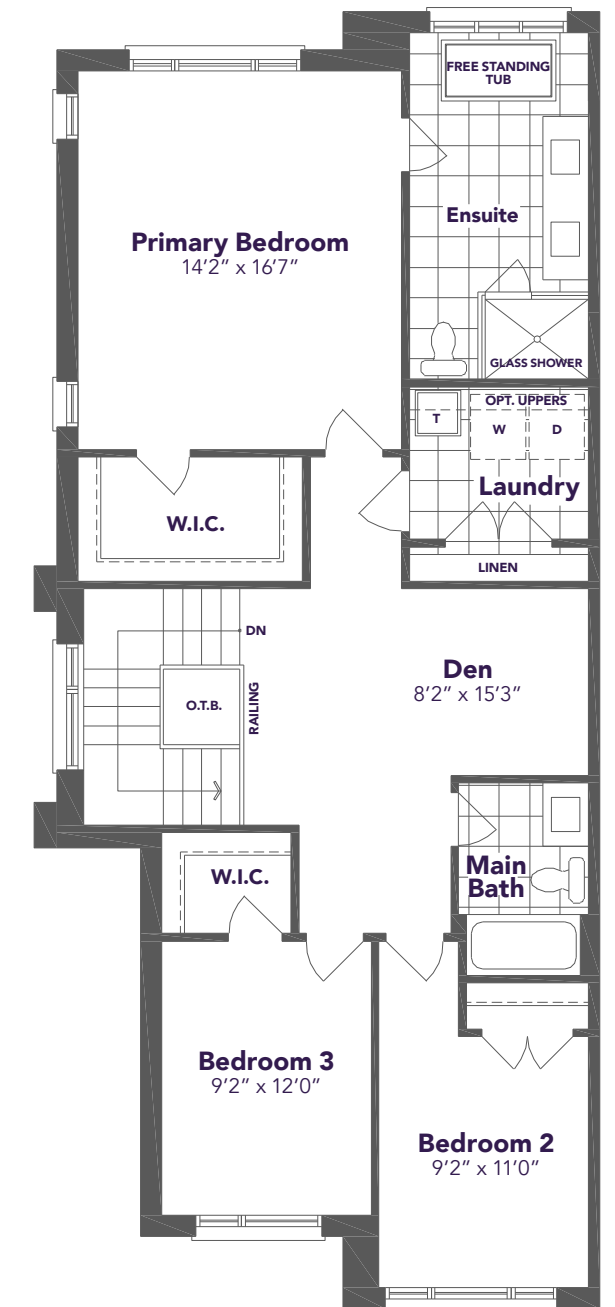
2,165 SQ.FT.



BASEMENT FLOOR PLAN



GROUND FLOOR PLAN



SECOND FLOOR PLAN